

# CRINS Applications: Status Update

# Status Overview

<b>Site Name</b>	<b>Proponent</b>	<b>Status</b>
C8713 Long Point Way & Inglis Rd.	Rogers	Tentative Approval *
C8668 Norway Lake Rd. & Calabogie Rd.	Rogers	Site Approvals *
C8711 Wolfe Rapids Rd. & Centennial Lake Rd.	Rogers	Application Submitted

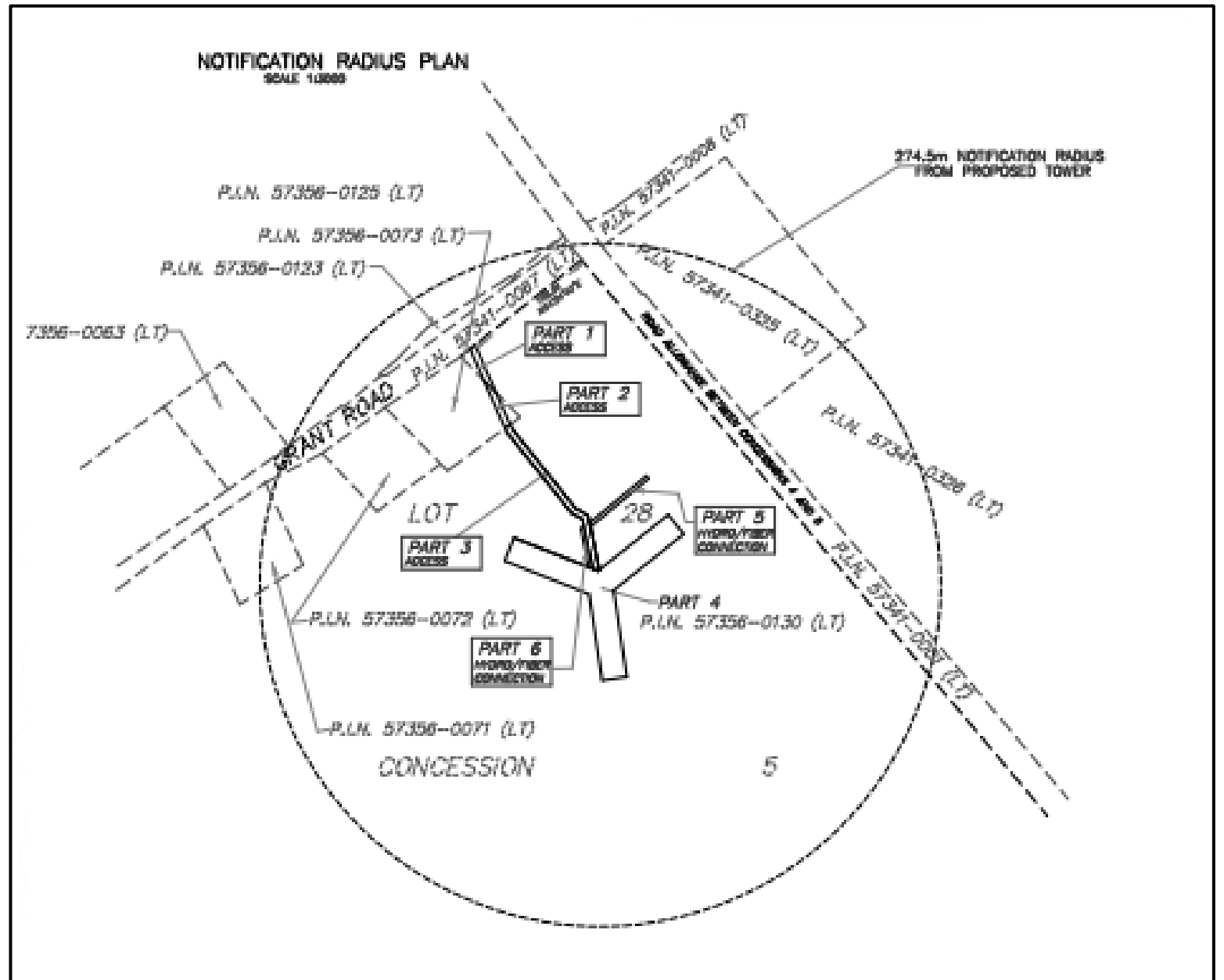
\* Comments from Transportation Canada and Nav Canada Pending

# C8713 Long Point Way & Inglis Rd.

<b>Geographic Township:</b>	Bagot
<b>Property Area:</b>	26.4 ha
<b>Tower Height:</b>	91.5 metres
<b>Setback from Front Lot Line:</b>	214 metres
<b>Setback from Side Lot Line:</b>	157 metres

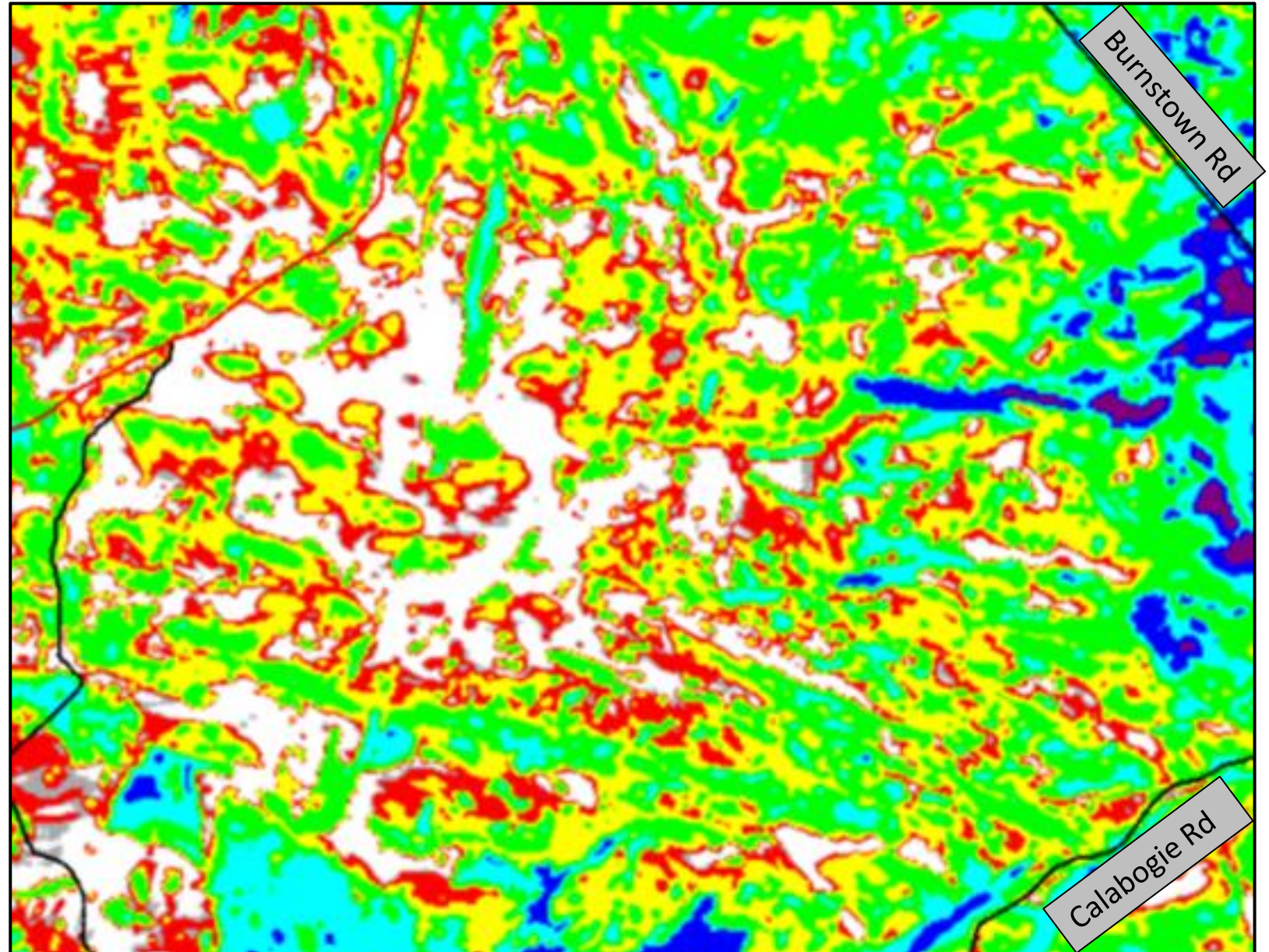


# C8713: Tower Site Plan Sketch



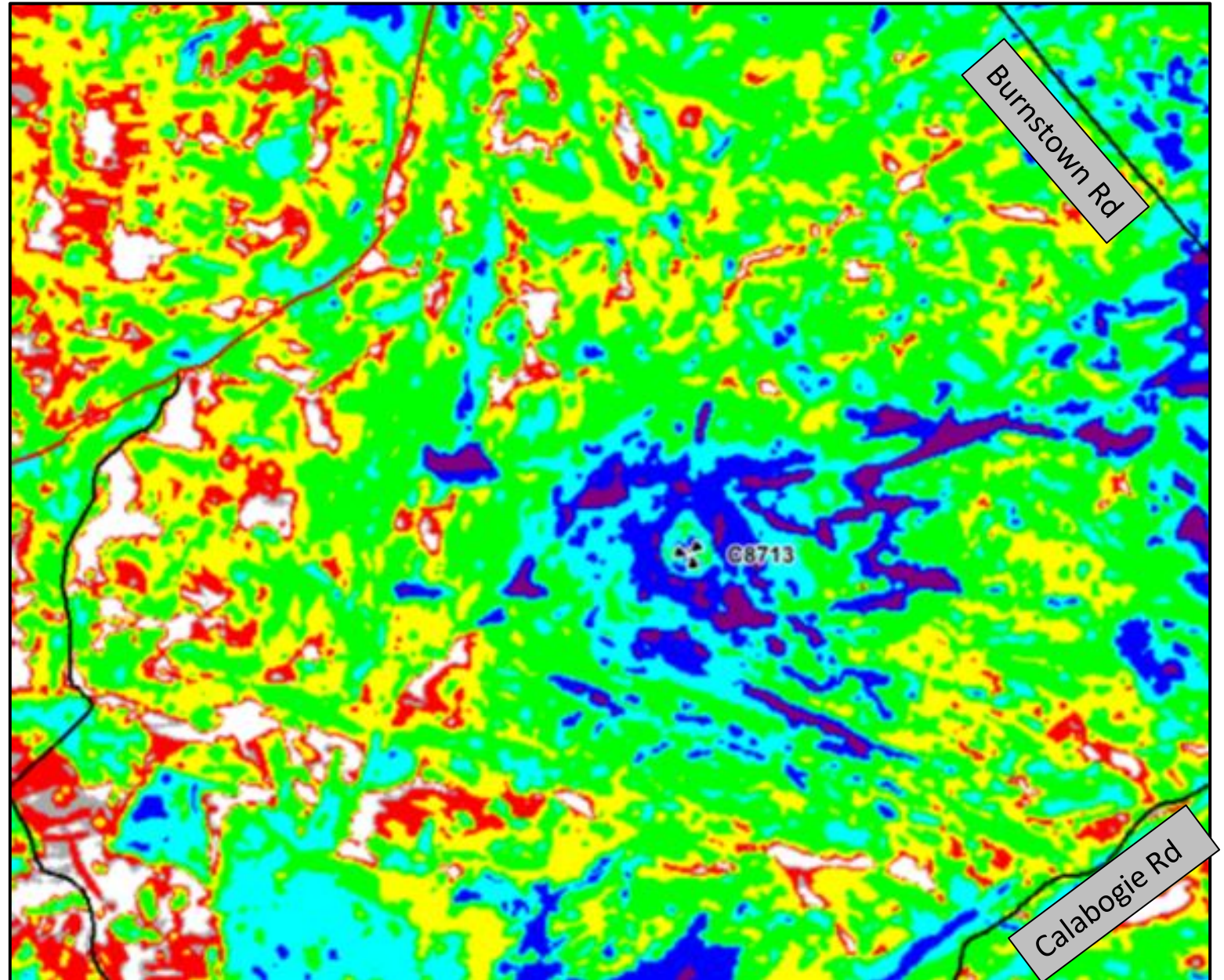
# C8713: Coverage Map Before

Clutter Margin	RSRP Range
Benchmarking	-78 dBm or Greater
In-Building Dense	-88 to -78 dBm
In-Building Light	-98 to -88 dBm
In-Car	-110 to -98 dBm
On Street	-116 to -110 dBm
Minimum	-119 to -116 dBm
Fringe	Less than -119 dBm



# C8713: Coverage Map After

Clutter Margin	RSRP Range
Benchmarking	-78 dBm or Greater
In-Building Dense	-88 to -78 dBm
In-Building Light	-98 to -88 dBm
In-Car	-110 to -98 dBm
On Street	-116 to -110 dBm
Minimum	-119 to -116 dBm
Fringe	Less than -119 dBm

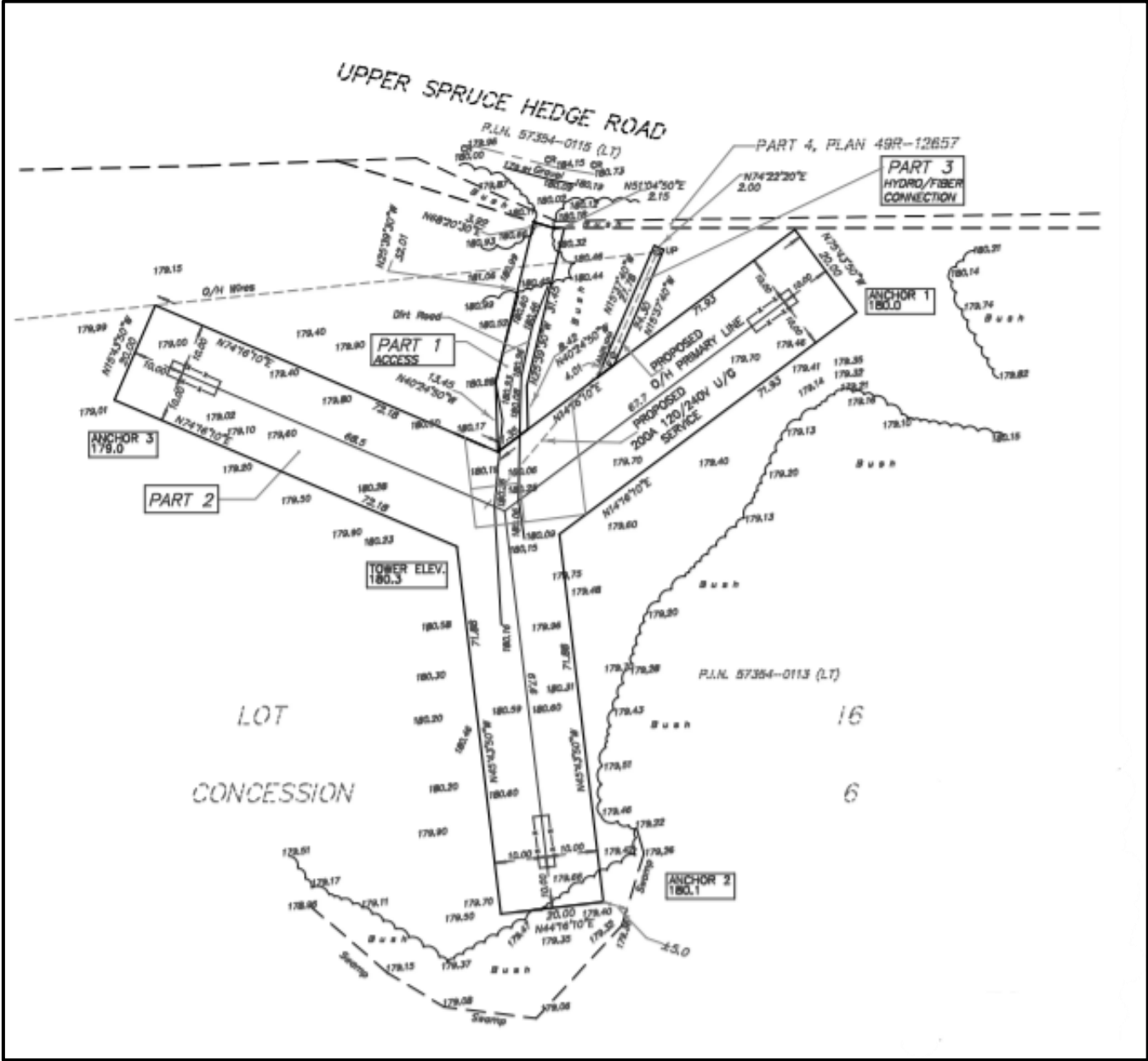


# C8668 Norway Lake Rd. & Calabogie Rd.

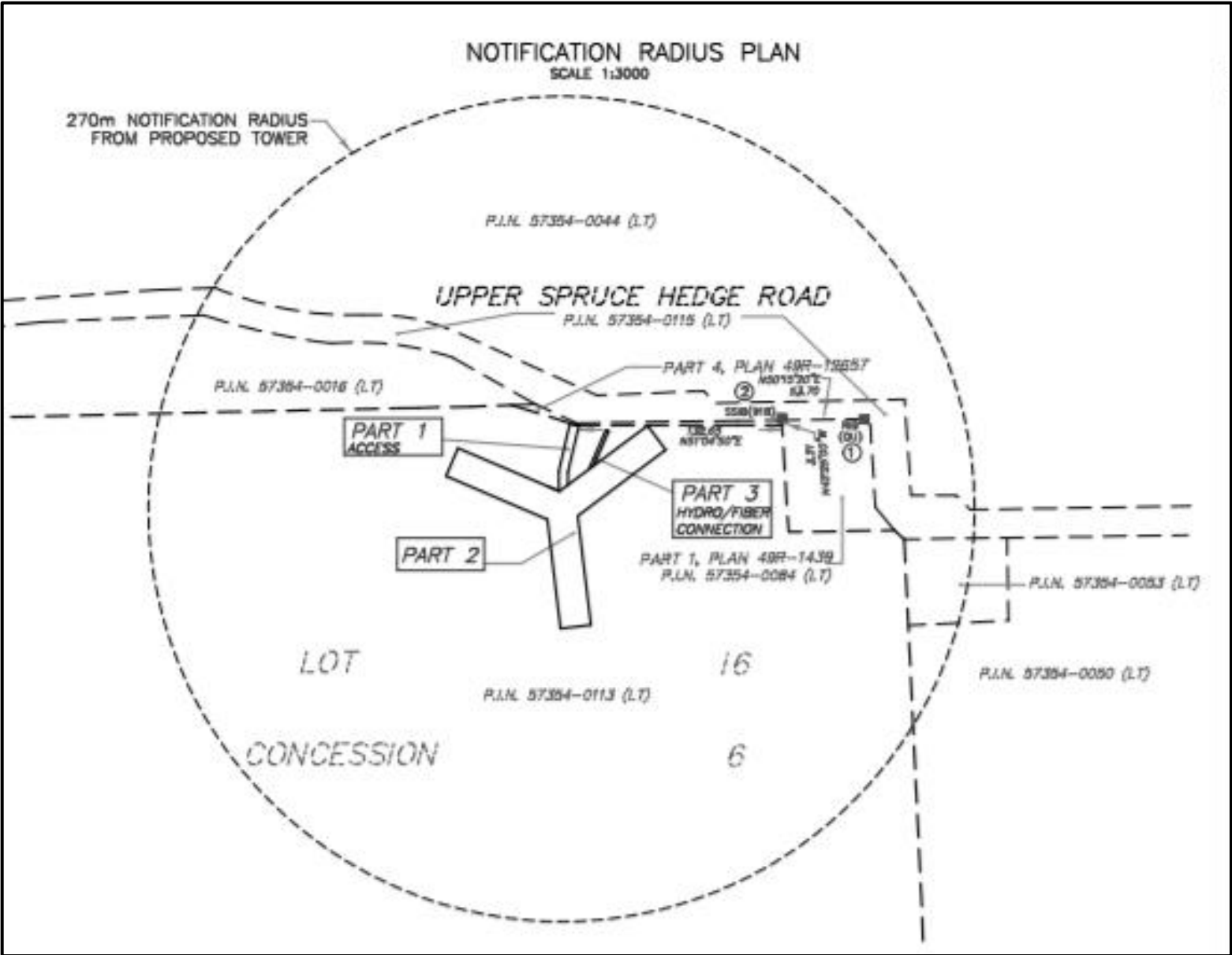
<b>Geographic Township:</b>	Bagot
<b>Property Area:</b>	78.7 ha
<b>Tower Height:</b>	90 metres
<b>Setback from Front Lot Line:</b>	56 metres
<b>Setback from Side Lot Line:</b>	147 metres



# C8668: Tower Site Plan Sketch

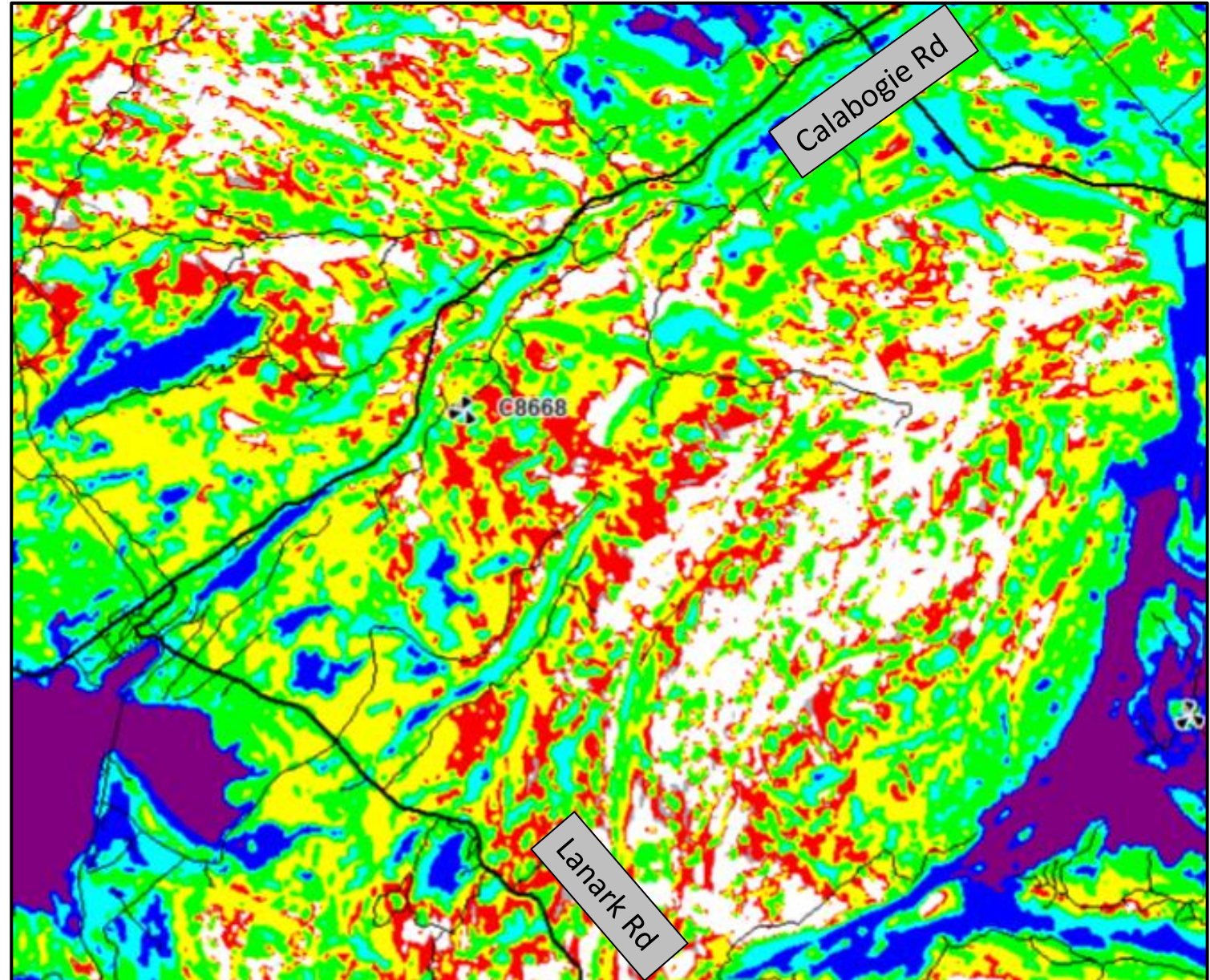


# C8668: Tower Site Plan Sketch



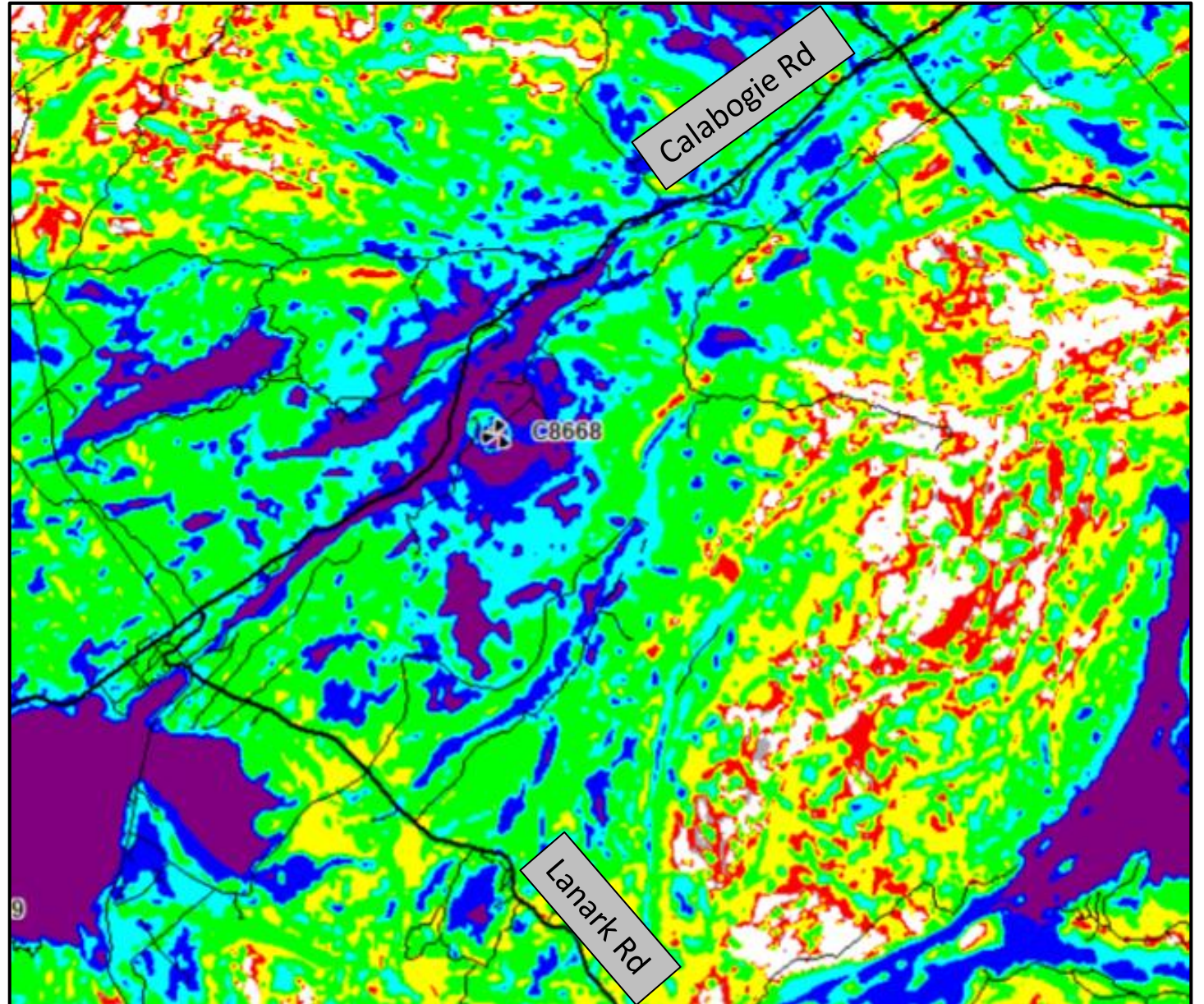
# C8668: Coverage Map Before

Clutter Margin	RSRP Range
Benchmarking	-78 dBm or Greater
In-Building Dense	-88 to -78 dBm
In-Building Light	-98 to -88 dBm
In-Car	-110 to -98 dBm
On Street	-116 to -110 dBm
Minimum	-119 to -116 dBm
Fringe	Less than -119 dBm



# C8668: Coverage Map After

Clutter Margin	RSRP Range
Benchmarking	-78 dBm or Greater
In-Building Dense	-88 to -78 dBm
In-Building Light	-98 to -88 dBm
In-Car	-110 to -98 dBm
On Street	-116 to -110 dBm
Minimum	-119 to -116 dBm
Fringe	Less than -119 dBm



# C8711 Wolfe Rapids Rd. & Centennial Lake Rd.

**Geographic Township:** Matawatchan

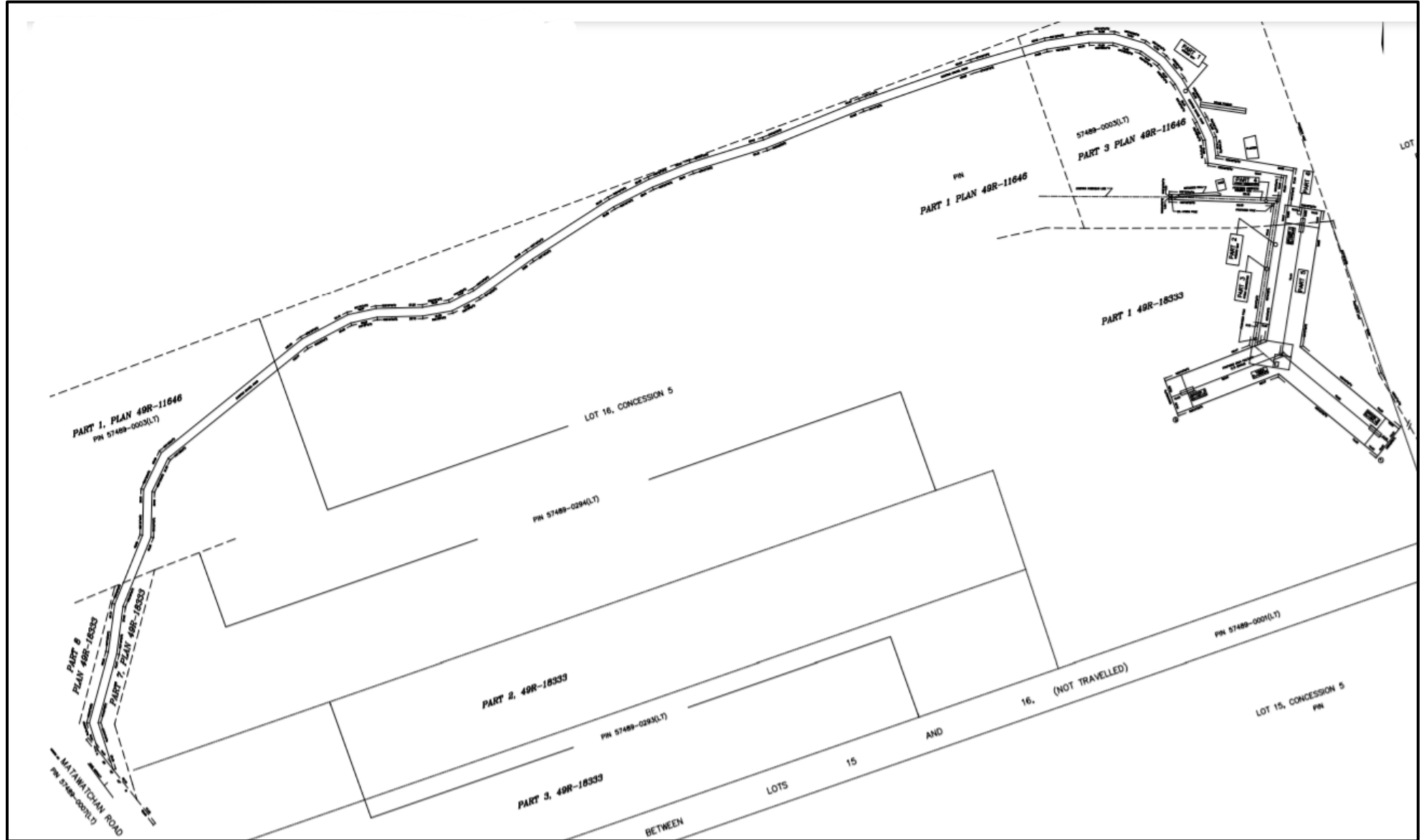
**Property Area:** 209 ha

**Tower Height:** 90 metres

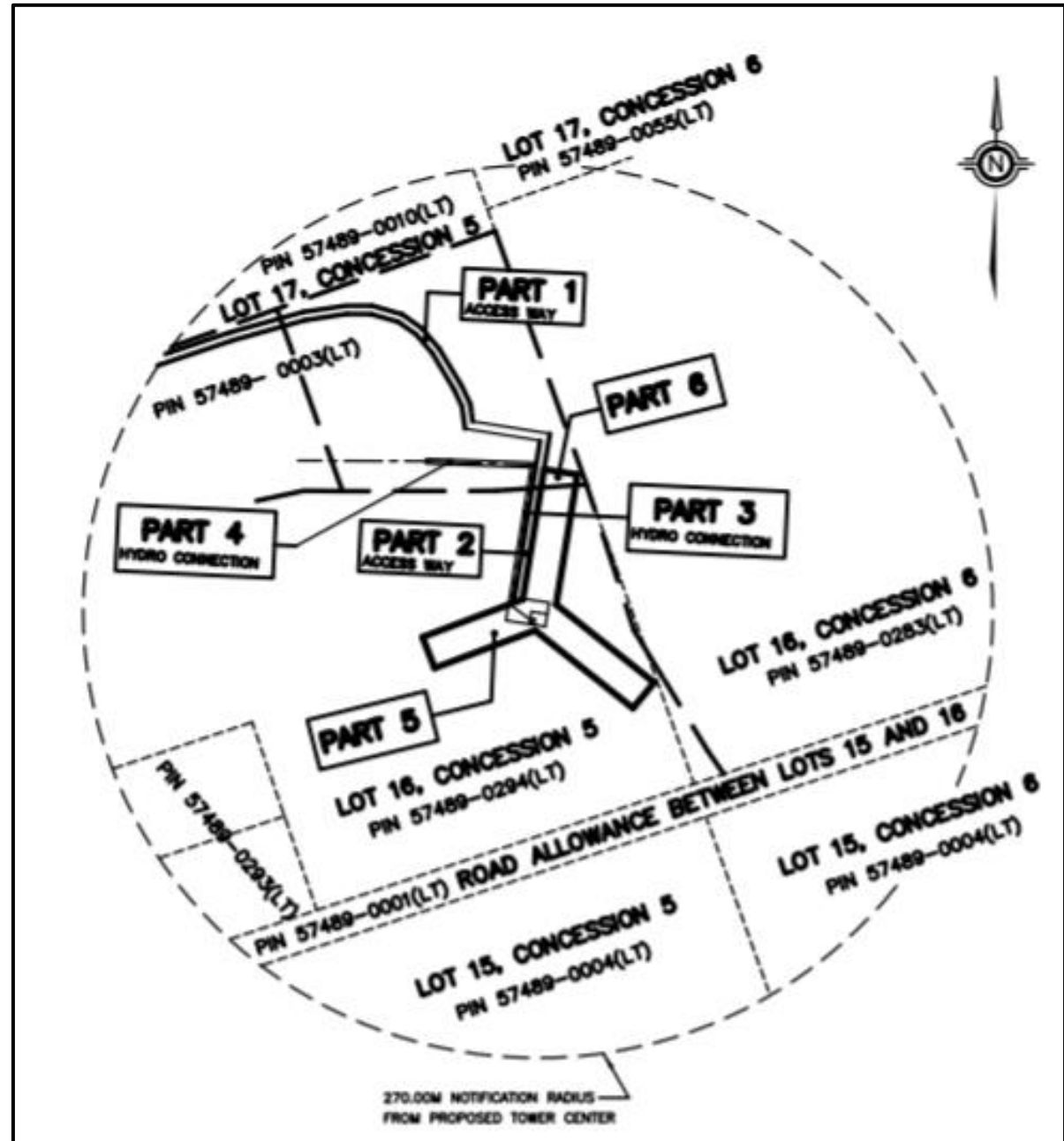
**Setback from Front Lot Line:** 1000 metres

**Setback from Side Lot Line:** Not provided

# C8711: Tower Site Plan Sketch

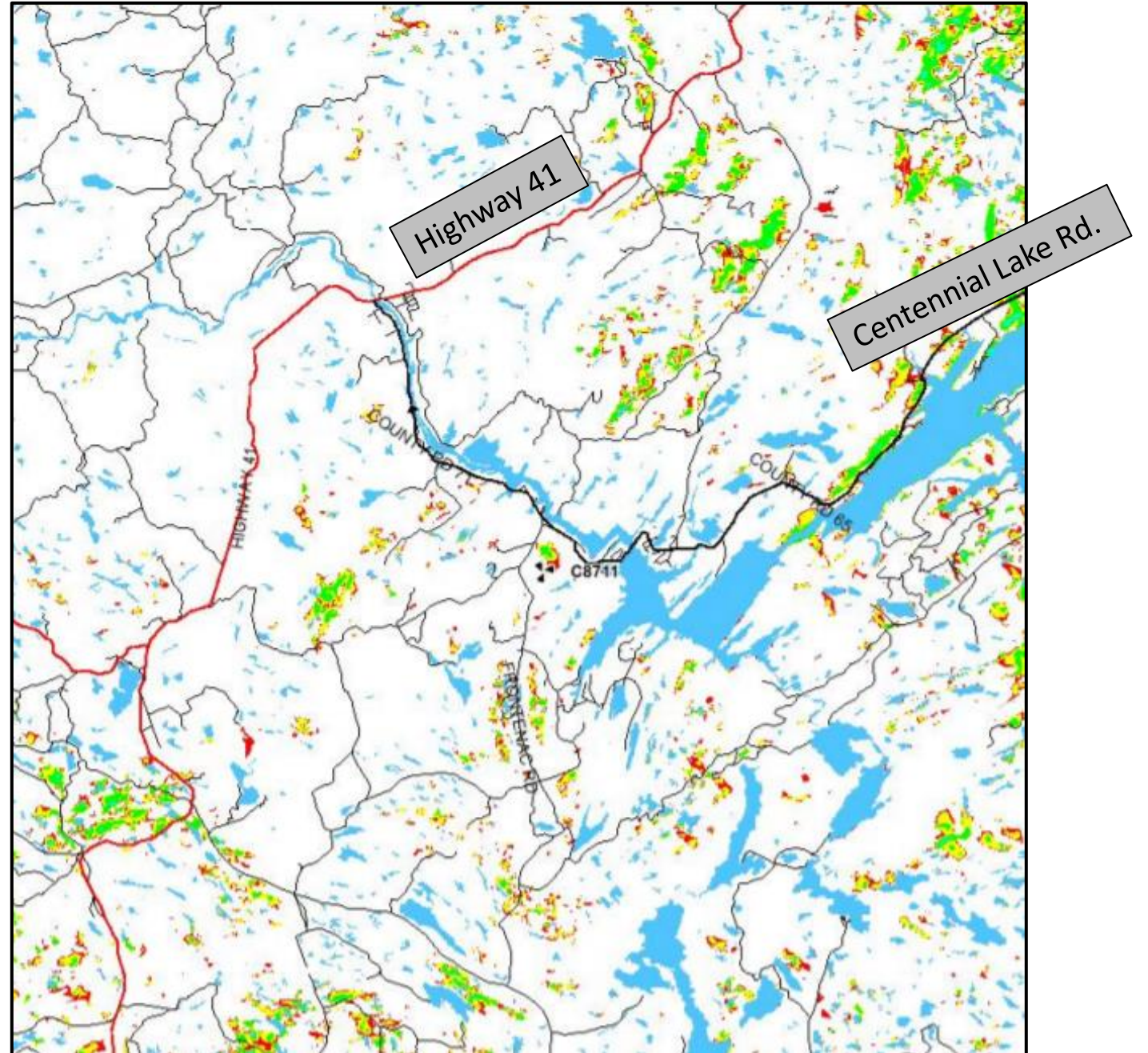


# C8711: Tower Site Plan Sketch



# C8711: Coverage Map Before

Clutter Margin	RSRP Range
Benchmarking	-78 dBm or Greater
In-Building Dense	-88 to -78 dBm
In-Building Light	-98 to -88 dBm
In-Car	-110 to -98 dBm
On Street	-116 to -110 dBm
Minimum	-119 to -116 dBm
Fringe	Less than -119 dBm





# C8711: Coverage Map After

Clutter Margin	RSRP Range
Benchmarking	-78 dBm or Greater
In-Building Dense	-88 to -78 dBm
In-Building Light	-98 to -88 dBm
In-Car	-110 to -98 dBm
On Street	-116 to -110 dBm
Minimum	-119 to -116 dBm
Fringe	Less than -119 dBm

