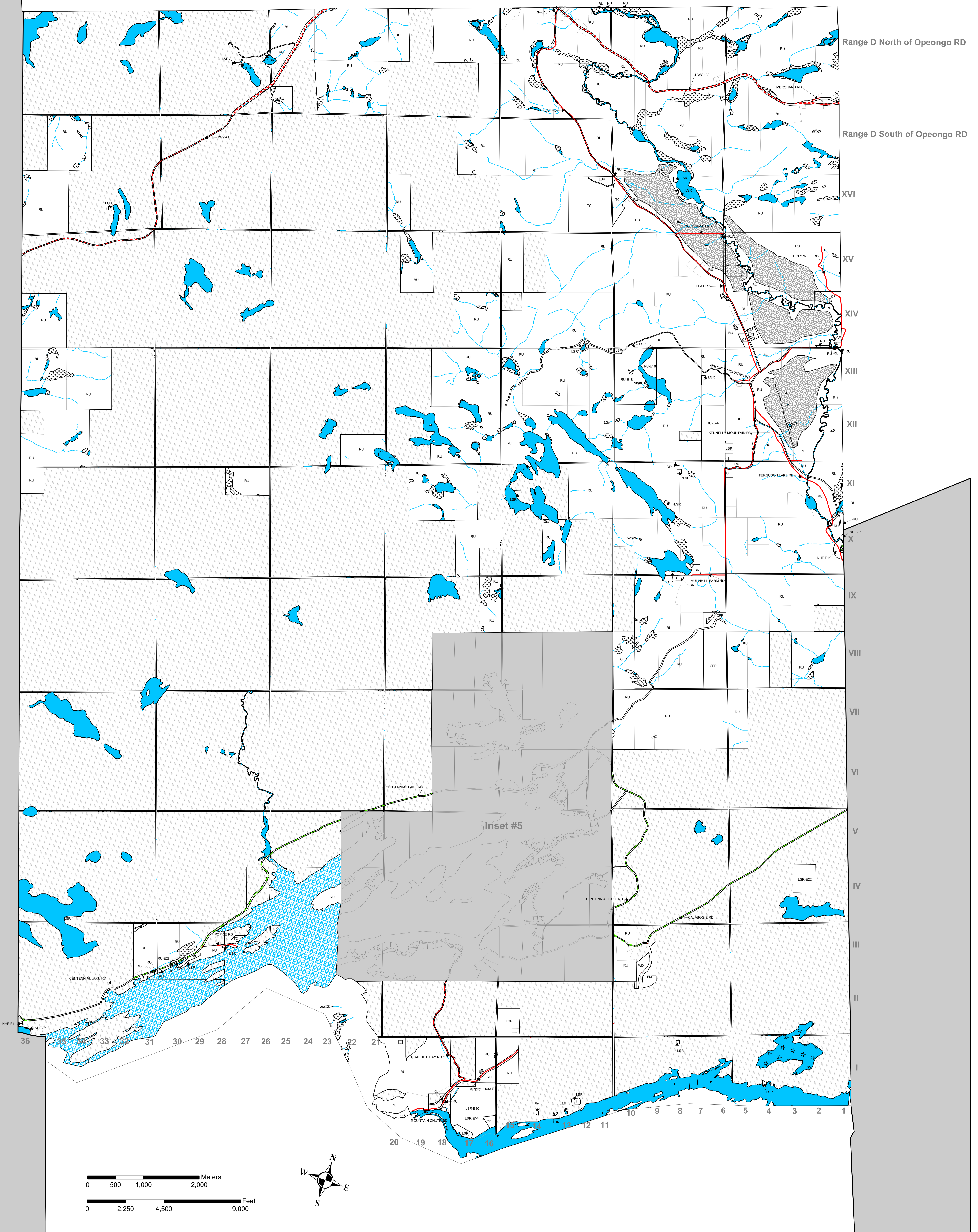


TOWNSHIP OF GREATER MADAWASKA ZONING BY-LAW SCHEDULE "B"



Legend

R1 Residential One	CFR County Forest
RR Rural Residential	Crown
LSR Limited Service Residential	Flooded Area
MHP Mobile Home Park	Environmental Protection (EP)
HAC Hamlet Commercial	Extractive Industrial (EM)
HC Highway Commercial	Extractive Industrial Reserve (EMR)
TC Tourism Commercial	Natural Heritage Feature (NHF)
GM General Industrial	Open Water
DM Disposal Industrial	Sensitive Lake
MM Mining Industrial	Inactive Waste Disposal Site
MMR Mining Industrial Reserve	Water Course
LM Light Industrial	K & P Corridor
RU Rural	County Road
CF Community Facility	Provincial Road
OS Open Space	Municipal Road
-E1 Exception One (Numbered consecutively for each respective zone classification e.g. RU-E1, RU-E2, etc.)	

This is Schedule "B" to By-Law No. **22-2003**
Passed the **25th** day of **November, 2003**.

Signatures of the Signing Officers

John M. Grant *Cathy Readdy*
Reeve Clerk

Last Consolidated
July 19, 2021

